

Datasheet

LIONTRON LiFePO₄ LX 12.8V 10.5Ah

Drop-In replacement for lead batteries with maximum service life.

LIONTRON LifePO₄ batteries are a full 12V lead battery replacement with all the advantages of lithium iron phosphate. It offers a significant weight reduction, enormous energy reserves and stable voltage even under extreme loads.

The storage battery has been specially developed to fully meet the high demands placed on a storage battery today. Highest safety and a long life span are guaranteed even with regular deep discharges thanks to the latest lithium technology. It enables an extremely high cycle life (over 3000 cycles at 90% DoD) and makes the LIONTRON® batteries the optimal traction battery.

The battery is only suitable for 12V installation. A parallel connection to increase the capacity is possible (serial connection to e.g. 24V is not possible).

More energy per kilogram.

The LIONTRON® Lithium Battery was especially developed as an alternative for much heavier lead acid batteries. The battery weighs only about 3kg and is very easy to transport.

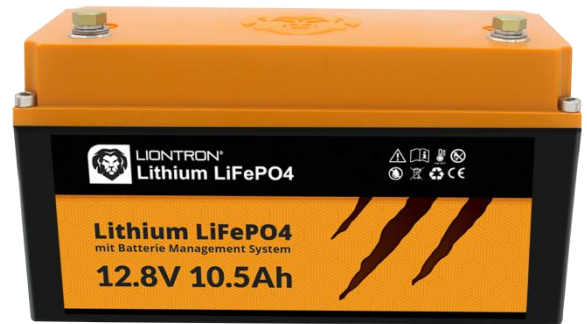
Due to its absolutely usable capacity, it replaces lead batteries with a capacity of up to 20Ah in practice despite its extremely light construction.

Secure lithium technology Absolutely safe and maintenance free.

Our batteries are based on lithium iron phosphate technology (LiFePO₄). This is currently the safest lithium technology. In addition, our customized housings and electronics increase safety and durability.

Each battery consists of a high-performance lithium iron phosphate (LiFePO₄) accumulator and an integrated battery management system, or BMS for short. This constantly monitors the status of the individual cells and protects them against overcharge, overvoltage and overtemperature, among other things.

Early failure of the storage tank due to environmental influences or incorrect use is prevented in advance by the BMS.



High-performance traction / storage battery especially for mobile or stationary use with highest demands.

Most secure lithium-technology (LiFePO₄) lithium iron phosphate. No gases, no explosion or fire hazard. Absolutely maintenance-free.

Light weight enormous weight saving compared to AGM or Gel lead batteries. Especially easy to transport.

Integrated (BMS) Battery-Management-System with adaptive cell balancing. Protection against short circuit, overloading and deep discharge.

High cycle life Maximum cycle life with over 3000 cycles, even with regular deep discharges.

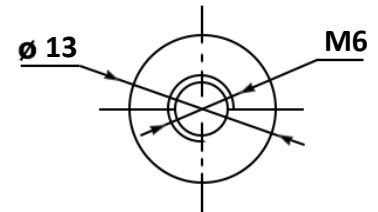
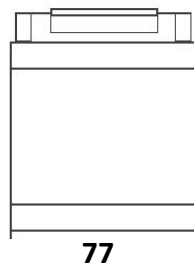
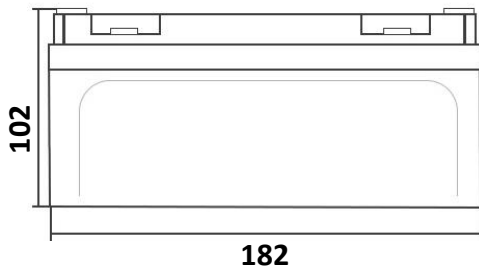
1 to 1 replaceable with lead accumulators AGM-/GEL without changing the loading/unloading structure.

Low self-discharge only about 3% per month (10% per year) for storage / non-use.



Technical data

LIONTRON LiFePO₄ LX 12.8V 10.5Ah



Connection: M6

Model	LI1210LX
EAN / GTIN	4260586370119
Rated capacity	10.5Ah / 134.4Wh
Voltage range	11.0 .. 14.6V
Rated voltage	12.8V
Cycle life	≥3000 @90% DoD
Charge characteristic	CCCV / IU
Bulk voltage	14.2 – 14.6V
Float voltage	13.5 – 13.8V
Recommended max. charge current	5A
Max. charge current	10A
Max. discharge current	10A
Pulse discharge current (≤20Sek.)	20A
Battery Management System	integrated
Monitoring	Bluetooth not available
Application	12V installation, parallel connection only
Protection class	IP65
Temperature (discharge)	-20°C .. +60°C
Temperature (charge)	0°C .. +45°C
Temperature (storage)	-40°C .. +60°C
Arctic Upgrade	not available
Connection	M6
Terminal arrangement	Positive terminal left
Warranty	5 years manufacturer warranty
Weight	1.5 kg
Dimensions (L x W x H) in mm	182 x 77 x 102