

Datasheet

LIONTRON LiFePO4 Smart BMS 12.8V 150Ah under seat

Drop-In replacement for lead batteries with maximum service life.

LIONTRON LifePO4 batteries are a full 12V lead battery replacement with all the advantages of lithium iron phosphate. It offers a significant weight reduction, enormous energy reserves and stable voltage even under extreme loads.

The storage battery has been specially developed to fully meet the high demands placed on a storage battery today. Highest safety and a long life span are guaranteed even with regular deep discharges thanks to the latest lithium technology. It enables an extremely high cycle life (over 3000 cycles at 90% DoD) and makes the LIONTRON® batteries the optimal traction battery.

The battery is only suitable for 12V installation. A parallel connection to increase the capacity is possible (serial connection to e.g. 24V is not possible).



Integrated Bluetooth monitoring

Always know your battery status.

With the integrated Bluetooth 4.0 monitoring, you always have all important battery data in view on your smartphone or tablet. Among other things, the app displays the following data in real-time:

- Battery state of charge in % (SoC)
- Battery voltage
- Charge / discharge current
- Remaining capacity
- Battery temperature
- Number of charge / discharge cycles
- Rated- / capacity

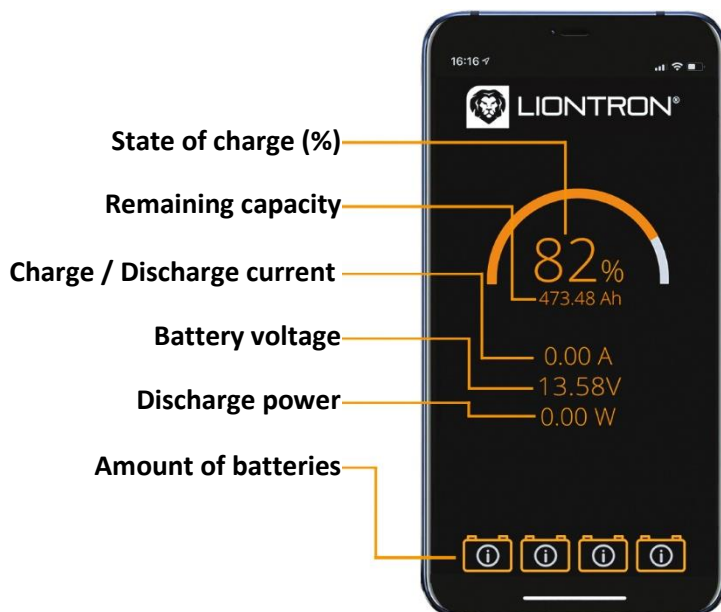
To connect the battery and a smartphone / tablet, the device must support Bluetooth version 4.0.

Secure lithium technology

Absolutely safe and maintenance free.

Our batteries are based on lithium iron phosphate technology (LiFePO4). This is currently the safest lithium technology. In addition, our customized housings and electronics increase safety and durability. Each battery consists of a high-performance lithium iron phosphate (LiFePO4) accumulator and an integrated battery management system, or BMS for short.

This constantly monitors the status of the individual cells and protects them against overcharge, overvoltage and overtemperature, among other things. Early failure of the storage tank due to environmental influences or incorrect use is prevented in advance by the BMS.

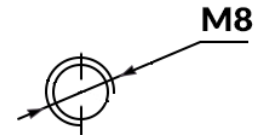
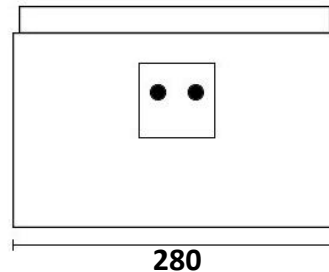
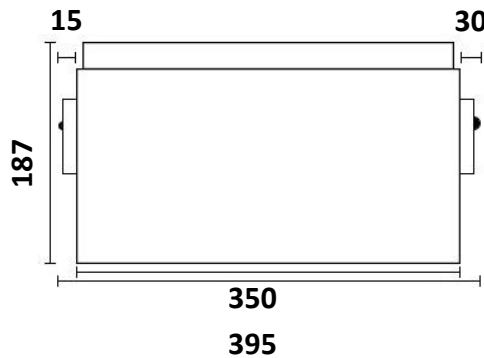


Bluetooth App Download
<https://liontron.com/downloads/>



Technical data

LIONTRON LiFePO₄ Smart BMS 12.8V 150Ah under seat



Connection: M8

| | |
|-----------------------------------|--|
| Model | LIDUCSM12150LX |
| EAN / GTIN | 4260586370232 |
| Rated capacity | 150Ah / 1920Wh |
| Voltage range | 11.0 .. 14.6V |
| Rated voltage | 12.8V |
| Cycle life | ≥3000 at 90% DoD |
| Charge characteristic | CCCV / IU |
| Bulk voltage | 14.2 – 14.6V |
| Float voltage | 13.5 – 13.8V |
| Recommended max. charge current | 75A |
| Max. charge current | 150A |
| Max. discharge current | 150A |
| Pulse discharge current (≤20Sek.) | 200A |
| Battery Management System | integrated |
| Monitoring | Bluetooth 4.0 with Smartphone App |
| Application | 12V installation, parallel connection only |
| Protection class | IP65 |
| Temperature (discharge) | -20°C .. +60°C |
| Temperature (charge) | 0°C .. +45°C |
| Temperature (storage) | -40°C .. +60°C |
| Arctic Upgrade | optional, for usage up to -30°C |
| Terminal | M8, screw |
| Pole arrangement | Positive pole left |
| Warranty | 5 years manufacturer warranty |
| Weight | 21.0 kg |
| Dimensions (L x W x H) in mm | 395 x 280 x 187 |